



Red Bull Crashed Ice

Ice Cross Downhill World Championship

Athletes' Rulebook 2016

Tour stops and other details are outlined on the website under
www.redbullcrashedice.com

All rights reserved.

**© Copyright: Red Bull Crashed Ice, Fuschl Am See, Austria, 2015.
No part of this booklet may be reproduced in any form or by any means
without the written permission of Red Bull Crashed Ice World Championship.**



Table of Contents

	Page
Section 1 – Competition Regulations	
1.1: Licenses	3
1.2: Limitation of participation	3
1.3: Disclaimer / Competitors / Type of competition	6
1.4: Sponsorship and Advertising	7
Section 2 – The Competition	
2.1: Individual Red Bull Crashed Ice competition Format	8
2.2: Individual World Championship Ranking	13
2.3: Team Competition - Competition Format	16
2.4: Athletes Briefing	20
2.5: Inspection and Training	20
2.6: Contact / Disqualification	20
2.7: Rule Violations	21
2.8: False Start	21
2.9: Protest / Video Control	21
Section 3 – Competition Notes	
3.1: Equipment	23
3.2: Starting and Bib Numbers	24
3.3: Competition Committee	24
3.4: Athletes' Representative	25
3.5: Competition Cancellation	25
3.6: POV Cameras	25
3.7: Timing / Transponders	26
Required Equipment	27
Example 1 (Helmet)	28
Example 2 (Jersey)	29



Section 1 – Competition Regulations

1.1: Licenses

All events in the ATSX Calendar must be held under the applicable ATSX Rules.

All events in the Red Bull Crashed Ice Calendar must be held under the applicable Red Bull Crashed Ice Rules.

A competitor must have a valid ATSX license to take part in any Red Bull Crashed Ice race or competition.

A valid passport shall determinate the country of origin of a competitor.

A Technical Delegate of the ATSX must supervise all competitions listed in the ATSX Calendar.

1.2: Limitation of participation

Quotas for men competitions

A competitor must have a valid ATSX license to take part in any Red Bull Crashed Ice race or competition in accordance with current quotas.

Personal Spots: Top 64 from the current ATSX World Ranking

The Top 64 in the current ATSX World Ranking have a personal spot on the start list for the next Red Bull Crashed Ice race or competition. A restriction of a maximum of 8 competitors per country ranked in the current ATSX World Ranking is applicable.

In countries with more than 8 competitors in the Top 64 of the ATSX World Ranking, the 8 best ranked athletes in the Top 64 of the ATSX World Ranking shall get the secured spots.

Basic Country Quota for all countries: 2

National ICDH Associations affiliated with the ATSX – or clubs affiliated with the ATSX – may invite 2 competitors from their country. If there is no National ICDH Association or club in place in a country, the ATSX Sport Director can invite 2 competitors per country based on their ATSX World Ranking and their recent sportive performance.

Host Country Quota: 8

The host country of a Red Bull Crashed Ice race or competition will have 8 spots for National riders at their event. The host country organization together with the National ICDH Association or club affiliated with the ATSX will get the best available riders based on their ATSX World Ranking. A close alignment with the ATSX sport director is

mandatory. The hosting country quota can only nominate athletes with a valid passport of the hosting country.

The Host Country Quota athletes must take part in all activities of the competition (Section 2.1).

Personal spot from Riders Cup: 3

The top 3 competitors of each Riders Cup race, not already qualified for the next Red Bull Crashed Ice, will receive a starting spot at the next Red Bull Crashed Ice race. The spot is not transferable to another Red Bull Crashed Ice race.

Quotas for women

A competitor must have a valid ATSX license to take part in any Red Bull Crashed Ice race or competition in accordance with current quotas.

A minimum of 8 women will need to start at a Red Bull Crashed Ice event to make the race or competition official.

Personal Spots: Top 16 from the current ATSX World Ranking

After the first race of the season, the Top 16 in the current ATSX World Ranking have a personal spot on the start list for the next Red Bull Crashed Ice race or competition. A restriction of a maximum of 4 competitors per country ranked in the current ATSX World Ranking is applicable.

In countries with more than 4 competitors in the Top 16 of the ATSX World Ranking, the 4 best ranked athletes in the Top 16 of the ATSX World Ranking shall get the secured spots.

Basic Country Quota: 1

National ICDH Associations affiliated with the ATSX – or clubs affiliated with the ATSX – may invite 1 competitor from their country. If there is no National ICDH Association or club in place in a country, the ATSX Sport Director can invite 1 competitor per country based on their ATSX World Ranking and their recent sportive performance.

Host Country Quota: 8

The host country of a Red Bull Crashed Ice race or competition will have 8 spots. The host country organization together with the National ICDH Association or club affiliated with the ATSX will get the best riders available based on their ATSX World Ranking. A close alignment with the sport director is mandatory. The hosting country quotas can only nominate athletes with a valid passport of the hosting country.

The Host Country Quota athletes must take part in all activities of the competition (Section 2.1).



Registration

All athletes who want to take part in a Red Bull Crashed Ice event must register for every race or competition at www.AT SX.org. Registration will close **10 days** at 18.00 UTC prior to each Red Bull Crashed Ice shootout event.

Entries made after the posted deadline will not be considered.

Classifications and Types of Competition

The AT SX World Ranking

For the first Red Bull Crashed Ice event of the season, the AT SX World Ranking is compiled from the best 8 results of the last 12 races in the official calendar.

After the first Red Bull Crashed Ice event of the 2015/2016 season, the AT SX World Ranking will compile all results from Red Bull Crashed Ice, Riders Cup and AT SX affiliate National Championship events from the last 52 weeks up to the official release.

An updated AT SX World Ranking will be posted at www.AT SX.org by 18.00 UTC on the Tuesday following each Red Bull Crashed Ice race or competition.

Ice Cross Downhill Men World Championship

The Ice Cross Downhill Men World Championship will consist of 4 Red Bull Crashed Ice races and 6 (or more) Riders Cup races affiliated with the AT SX. The best 3 results from Red Bull Crashed Ice races and the best 3 results from the Riders Cup races will be compiled to crown the World Champion 2015/2016.

Ice Cross Downhill Women World Championship

The Ice Cross Downhill Women World Championship will consist of 4 Red Bull Crashed Ice races. The best 3 results from Red Bull Crashed Ice races will be compiled to crown the World Champion 2015/2016.

Team Competition World Championship

The Team Competition World Championship will consist of 4 Red Bull Crashed Ice races affiliated with the AT SX.

1.3: Disclaimer / Competitors / Type of Competition

Each competitor must be 16 years of age (18 years of age in Canada) before the competition (Shootout) starts. In all other host countries, competitors under 18 years of age are only allowed to start with their parents' or legal representative's written permission. This rule may be adapted in accordance with the legislation of the host country.

No competitor is allowed to start without having produced a signed disclaimer. By signing the disclaimer the competitor confirms that he/she:

- inspected the track from the outside;
- takes part at his own risk;
- holds a private and valid accident insurance; and
- accepts the official rules of the competition.

The competitors are obliged to make themselves familiar with the appropriate Red Bull Crashed Ice Rules and must comply with the additional instructions of the ATSX Federation. Competitors must follow all Red Bull Crashed Ice and ATSX rules and regulations.

Competitors, who do not attend the prize-giving ceremonies without decent excuse approved by an ATSX sport delegate, lose their claim to any prize including prize money. Another member of his team may represent, in exceptional circumstances, the competitor, but this person has no right to take his place on the podium.

Competitors must behave in a correct and sportsmanlike manner towards members of the Organizing Committee, volunteers, officials and the public.

The Competition Committee and the ATSX Sport Director may disallow any competitor from competing at any time if the competitor shows an unacceptable attitude on or off the track to other competitor, organization member, media member, spectator or anybody closely related or not to the competition.

Competitor insurance

All competitors participating in Red Bull Crashed Ice events must carry accident insurance, in sufficient amounts to cover accident, transport and rescue costs, including race risks. Competitors must be able to show proof of the respective insurance coverage at any time on request of Red Bull Crashed Ice, the ATSX, one of their representatives or the Organizing Committee.



1.4: Sponsorship and Advertising

The official tour patch will be provided and sewn on at the first race of the season (on both jerseys, Individual Jersey and Team Jersey). See Example 1 for details at the end of the rulebook.

All competitors shall reserve three free spaces (minimum 6 × 5 cm each) on their helmet for the Organizing Committee (to place the country flag and bib numbers). See Example 1 for details at the end of the rulebook.

All competitors shall reserve free spaces (minimum 10 cm high) on each sleeve of their individual and team competition jerseys to the Organizing Committee. See Example 2 for details at the end of the rulebook.

Displaying any brand or logo on their head during the prize giving ceremony (podium) or at the press conference will lead to loss of prize money for the rider.

Advertising on all pieces of equipment is permitted as long as it alters in no way the legibility of the bib number and does not conflict with the official Ice Cross Downhill, ATSX affiliated, or event sponsors. The competition committee has the right to ban competitor's partners that are not suitable for sports (e.g. drugs) without notice. **Advertising for tobacco, drugs (narcotics) or any energy drink other than Red Bull is forbidden.**



Section 2 – The Competition

2.1: Individual Red Bull Crashed Ice Competition Format

Red Bull Crashed Ice competitions shall typically be held over a three-day period:

Day 1 – Exploration & training

Evening

Athletes Briefing
Course inspection
Open Training

Day 2 – Shootout Day

Morning

Athletes Briefing
2 Training runs
Women Shootouts
Men Shootouts,

Day 3 – Finals

Morning

Athletes Briefing
1 Hour Open Training

Evening

Finals

Under certain circumstances, a Red Bull Crashed Ice competition may be compacted in two days or even one single day comprising training sessions, Shootouts, and Finals. In this case the race format may be changed and/or adapted.

Course Inspection Procedure

The competitors' inspection takes place after the inspection by the ATSX Sport Director and after the ATSX Sport Director has opened the course. The course is generally inspected from top to bottom.

The course must be in racing condition at the time the competitors' inspection starts and no workers or others shall be on the course during the Sport Director and Competitors' inspection. The competitors are authorized to study the final setting of the course by skating down the course at low speed. It is not permitted to skate up the course at any time. A competitor shall be disqualified if seen skating up the course.

2.1.1: Red Bull Crashed Ice Shootout Procedure

Timed runs are used to qualify competitors for the Finals (heat format).

For the 2 morning training runs of Day 2, the Women Shootouts and the Men Shootouts, the starting order shall be determined by the athlete's position in the World Championship Ranking.

Female and male competitors proceed with their Day 2 morning training runs (2) and shootout runs by reverse ranking order (from last to first rank on both runs). For the first competition of the season, the order shall be based on the previous season's World Championship Ranking. If not applicable, a random draw will take place.

Start Intervals

During the Shootouts runs, a timer will be set at 30 seconds between each competitor. A display will show the countdown and the gates will open automatically at 0 seconds. The countdown will reset to 30 seconds automatically for the next rider and so on. A rider who misses his time slot will miss his run and not get a re-run.

Two formats are possible for timed qualifiers:

- a) Two-Run-Shootout – All competitors take two timed runs. The best time of these two runs determines the qualifier ranking (same start list order for both runs). A competitor who did not start (DNS), did not finish (DNF), or was disqualified (SDQ or DSQ) in Shootout Run One may nevertheless participate in Shootout Run Two.
- b) One-Run-Shootout – All competitors take one timed run (under particular circumstances).

In the Men Shootouts, two runs per competitor are timed and the fastest time counts. The top 64 riders advance to the Finals.

In the Women Shootouts, two runs per competitor are timed and the fastest time counts. The top 16 riders advance to the Finals.

If two or more competitors have the same best time, the tie shall be broken according to the total time of their two shootout runs. If a competitor has only one completed time on the clock, the second time will be considered as a no-time run (DNS, DNF, SDQ or DSQ) and the competitor will be ranked as the last of the competitors with the same best time.

If there is only one shootout run and two or more competitors have the same time, the competitor with the best position in the current World Championship Ranking shall be ranked first.

If a competitor is not able to ride the course safely and at a certain speed, the Competition Committee has the right to forbid the athlete from starting.

If the Shootout is cancelled, the matrix for the Finals will be filled based on the World Ranking.

2.1.3: Finals

The Finals shall be run in a single knockout format.

The shootout results determine the pairings for the Finals as follows:

Men Finals Matrix

Heat #				
1	1	32	33	64
2	16	17	48	49
3	8	25	40	57
4	9	24	41	56
5	4	29	36	61
6	13	20	45	52
7	5	28	37	60
8	12	21	44	53
9	2	31	34	63
10	15	18	47	50
11	7	26	39	58
12	10	23	42	55
13	3	30	35	62
14	14	19	46	51
15	6	27	38	59
16	11	22	43	54

Women Finals Matrix

Heat #				
1	1	8	9	16
2	4	5	12	13
3	2	7	10	15
4	3	6	11	14

The Finals Matrix shows which competitors shall compete in which heat. The order for choosing starting gates is based on the respective Shootout List ranking (Women or Men).

Under particular circumstances the program might be shortened. In this case, a different matrix will be presented to the competitors.

The shootout results determine the pairings for the Finals. If, for any reason, it is not possible to proceed with the Shootouts, the Finals Matrix will be filled based on the current World Championship Ranking.

Individual Race procedure

Choice of Starting Gate

In every race type, Finals and Short Program, the choice of starting gate for each heat is based on the ranking of the Shootout List. The best-ranked competitor from the Shootout List chooses a gate first, followed by the second best-ranked competitor, and so on.

Start Command

“Riders ready – *short pause* – 5 seconds warning.” During the next five seconds, the starting gate will open randomly to signal the start. Jumping the start or any other misconduct may result in disqualification by the Competition Committee.

At the finish line

For all Red Bull Crashed Ice competitions, the front tip of the blade of the competitor that crosses the finish line first determines the winner of the heat.

Deliberately kicking out of a skate (so that the skate is losing entirely its contact with the ice) at the finishing line, or throwing the body across the finishing line, is forbidden, and will lead to a disqualification.

The first and second competitors to cross the finish line advance to the next round.

2.1.4: Final Ranking

Competitors 1 to 4 are ranked according to their finishing place in the Final.

All other competitors are ranked according to the round they were eliminated in (e.g. semifinals), their position in their respective heat (3rd or 4th) and their ranking in the Shootout List among those who were eliminated in the same round. For example, both competitors eliminated in the semifinals finishing 3rd shall be ranked 5th and 6th, according to their ranking in the Shootout List. Both riders finishing 4th shall be ranked 7th and 8th, according to their ranking in the Shootout List.

All competitors eliminated in the quarterfinals finishing 3rd shall be ranked from 9 to 12, according to their ranking in the Shootout List, and so on. Then all competitors eliminated in the quarterfinals finishing 4th shall be ranked from 13 to 16, according to their ranking in the Shootout List, and so on.

In the knockout format heats, competitors who do not complete a round will be ranked as follows: DNF (did not finish) shall be ranked the highest, followed by SDQ (sport disqualification) and DSQ (intentional contact).

All competitors who are not qualified for the Finals are ranked according to their position in the Shootout List.

2.1.4.1: DNS vs. Lucky Looser

A competitor who does not start in the Round of 64 in which he was scheduled to start shall automatically be replaced by the best competitor available who did not qualify (the Lucky Looser).

In the Round of 64, if a competitor does not start, he will be replaced by the best-ranked competitor up to this point. This means the 65th ranked competitor after the Shootouts will be back in the competition.

The competitor who DNS'd will take the ranking spot of his replacement, the 65th spot in the Final competition ranking.

If, in the same round, two or more competitors do not start, the matrix will be filled with the best-ranked competitors who did not qualify for the next round. The Final ranking will follow the explanation above. The best-ranked competitor who DNS'd will always be ranked as the best unqualified competitor. The second best-ranked competitor who DNS'd will be replaced by the second best-ranked competitor who did not qualify, and so on.

2.2: Red Bull Crashed Ice Individual Ice Cross Downhill World Championship Ranking

The Red Bull Crashed Ice Individual Ice Cross Downhill World Championship will consist of 4 Red Bull Crashed Ice races and 6 Riders Cup races.

The winner of the World Championship will be determined as follows:

The best 3 scores from the Red Bull Crashed Ice races will be totaled to give an adjusted point score.

For the Riders Cup, the 3 best scores will be totaled together with the Red Bull Crashed Ice races points to give an adjusted point score.

Tie Breaking: If two or more competitors are tied, the number of first rankings in a Red Bull Crashed Ice competition or, if still tied, the number of second rankings in a Red Bull Crashed Ice competition, etc. prevails. If the tie remains, the best shootout result shall prevail.



2.2.1: Red Bull Crashed Ice Competition Ranking

Points shall be allocated for each Red Bull Crashed Ice Competition as follows:

Pos.	%	Points	Pos.	%	Points	Pos.	%	Points	Pos.	%	Points
1	100	1000.00	26	5.0	50.00	51	1.52	15.20	76	0.77	7.70
2	80	800.00	27	4.5	45.00	52	1.49	14.90	77	0.74	7.40
3	60	600.00	28	4.0	40.00	53	1.46	14.60	78	0.71	7.10
4	50	500.00	29	3.6	36.00	54	1.43	14.30	79	0.68	6.80
5	45	450.00	30	3.2	32.00	55	1.40	14.00	80	0.65	6.50
6	40	400.00	31	2.8	28.00	56	1.37	13.70	81	0.62	6.20
7	36	360.00	32	2.6	26.00	57	1.34	13.40	82	0.59	5.90
8	32	320.00	33	2.4	24.00	58	1.31	13.10	83	0.56	5.60
9	29	290.00	34	2.2	22.00	59	1.28	12.80	84	0.53	5.30
10	26	260.00	35	2.0	20.00	60	1.25	12.50	85	0.50	5.00
11	24	240.00	36	1.97	19.70	61	1.22	12.20	86	0.47	4.70
12	22	220.00	37	1.94	19.40	62	1.19	11.90	87	0.44	4.40
13	20	200.00	38	1.91	19.10	63	1.16	11.60	88	0.41	4.10
14	18	180.00	39	1.88	18.80	64	1.13	11.30	89	0.38	3.80
15	16	160.00	40	1.85	18.50	65	1.10	11.00	90	0.35	3.50
16	15	150.00	41	1.82	18.20	66	1.07	10.70	91	0.32	3.20
17	14	140.00	42	1.79	17.90	67	1.04	10.40	92	0.29	2.90
18	13	130.00	43	1.76	17.60	68	1.01	10.10	93	0.26	2.60
19	12	120.00	44	1.73	17.30	69	0.98	9.80	94	0.23	2.30
20	11	110.00	45	1.70	17.00	70	0.95	9.50	95	0.20	2.00
21	10	100.00	46	1.67	16.70	71	0.92	9.20	96	0.17	1.70
22	9.0	90.00	47	1.64	16.40	72	0.89	8.90	97	0.14	1.40
23	8.0	80.00	48	1.61	16.10	73	0.86	8.60	98	0.11	1.10
24	7.0	70.00	49	1.58	15.80	74	0.83	8.30	99	0.08	0.80
25	6.0	60.00	50	1.55	15.50	75	0.80	8.00	100	0.05	0.50

2.2.2: Individual Red Bull Crashed Ice Competition Ranking

Points obtained by all top 100 competitors shall be added to the World Championship Ranking tally after each competition.

An update of the Ice Cross Downhill World Championship Ranking will be posted at www.ATX.org by 18.00 UTC each Tuesday after a Red Bull Crashed Ice competition.

2.2.3: Riders Cup Ranking

Points shall be allocated for each Riders Cup race as follows:

Pos.	%	Points	Pos.	%	Points	Pos.	%	Points
1	100	250	26	14	35	51	4.25	10.625
2	80	200	27	13.5	33.75	52	4	10
3	60	150	28	13	32.5	53	3.75	9.375
4	50	125	29	12.5	31.25	54	3.5	8.75
5	45	112.5	30	12	30	55	3.25	8.125
6	40	100	31	11.5	28.75	56	3	7.5
7	38	95	32	11	27.5	57	2.75	6.875
8	36	90	33	10.5	26.25	58	2.5	6.25
9	34	85	34	10	25	59	2.25	5.625
10	32	80	35	9.5	23.75	60	2	5
11	30	75	36	9	22.5	61	1.75	4.375
12	28	70	37	8.5	21.25	62	1.5	3.75
13	26	65	38	8	20	63	1.25	3.125
14	25	62.5	39	7.5	18.75	64	1	2.5
15	24	60	40	7	17.5			
16	23	57.5	41	6.75	16.875			
17	22	55	42	6.5	16.25			
18	21	52.5	43	6.25	15.625			
19	20	50	44	6	15			
20	19	47.5	45	5.75	14.375			
21	18	45	46	5.5	13.75			
22	17	42.5	47	5.25	13.125			
23	16	40	48	5	12.5			
24	15	37.5	49	4.75	11.875			
25	14.5	36.25	50	4.5	11.25			

2.2.4: Individual Riders Cup Ranking

Points obtained by all top 64 competitors shall be added to the World Championship Ranking tally after each competition.

An update of the Ice Cross Downhill World Championship Ranking will be posted at www.ATX.org by 18.00 UTC each Tuesday after a competition.



2.3: Team Competition – Competition Format

Red Bull Crashed Ice Team Competition shall typically be a one-day competition:

– *Friday Night – Team Competition*

Athletes Briefing
Finals with Top 16 teams.

There is no specific team practice session.

There is no specific team Shootout session.

The Team Competition will be presented on Friday evening. In case of bad weather or poor ice conditions, the team competition may be cancelled.

2.3.1: Team Competition – Teams and Registration

A team shall be comprised of 4 athletes.

A team is allowed to remove a rider from the team roster and replace him with a free agent once per season. The rider who is replaced can return to the roster of the same team later in the season only if he did not race with another team during the season.

All members of a team need to get an official time from the Men or Women Shootouts to be eligible for the Team Competition.

Each team needs a captain who will make sure all rules are respected.

The captain of all teams who wish to take part in a Red Bull Crashed Ice Team Competition must register for every race or competition at www.AT SX.org. The registration will close **10 days** at 18.00 UTC prior each Red Bull Crashed Ice shootout event.

Entries made after the posted deadline will not be considered.

Eligibility

A team needs to have at least three official team members at the starting gates to be eligible for the Team Competition.



Team names shall be provided in the Latin alphabet (no expletives allowed; a team's application may be rejected if the team name is deemed unacceptable by the Competition Committee or not respecting the Team Sponsorship rules).

All team members must wear the same outfit (jersey, helmet, pants, socks, gloves, ...). Each team shall provide a specific Team Competition outfit design, different than their Individual race jerseys.

Existing team jerseys bearing trademarked logos from Hockey, Football, American Football, Baseball, or any other team sport are **not allowed**. The design must be somehow unique to the team.

The Competition Committee shall provide helmet number stickers (1, 2, 3) to members of all Top 16 teams that qualified for the Red Bull Crashed Ice Team Competition. Numbers are assigned according to the current Team Competition World Championship (at the first race, numbers will be assigned randomly).

An athlete may only enter in one team per competition.

2.3.2: Team Competition – Qualification system

The team competition is an open competition. A team can be composed of a mix of men and women, only men or only women.

At least 3 members of each team are required to start in the Individual Men or Women Shootouts to put the team on the official Team Qualification list.

Based on the Individual Shootouts mixed list (the Shootout mixed list consist of a mix of the men and women shootouts), the best competitor ranking from each team will count as their Team Qualification spot.

The Top 16 timed teams are allowed to participate in the Team Competition World Championship race.

The Team Qualification list will be available after the Men and Women Shootout.

2.3.3: Team Competition – Competition Format

Knockout format: 3 competitors from Team A run against 3 competitors from Team B. The 1st-placed team (from the Team Qualification list) competes against the 16th-placed team, the 2nd-placed team against the 15th-placed team, the 3rd-placed team against the 14th-placed team, and so on.

Both teams select gates alternatively. The team with the fastest qualification time (Team A) has the first pick. Any of the 3 riders from the team may choose any gate. The next gate



is picked by the other team (Team B). Team A picks the third gate, and the remaining gate goes to Team B. All Team members need to line up at the chosen gates.

3 athletes per team will start in each race. All members of a team may complete each Team Competition run. The choice of the 3 riders competing in a given run must be made at the latest when the riders exit the staging area.

Teams can shift one athlete per round.

All starting gates open at the same time.

The DQ rules are valid at all times during the RBCI Team Competition.

A DQ against one team member automatically leads to a DQ for the whole team.

The ranking of teams eliminated in the Round of 16 and Quarterfinals is determined by their ranking in the Team Qualification list. Teams who do not qualify for the knockout rounds (beyond 16th place) will get no points.

Team Competition Matrix

Heat #		
1	1	16
2	8	9
3	5	12
4	4	13
5	2	15
6	7	10
7	6	11
8	3	14

The knockout rounds follow the standard elimination system:

8 heats for Round of 16; 4 heats for Quarterfinals; 2 heats for Semifinals; 1 heat for 4th and 3rd place; 1 heat for 2nd and 1st place.



2.3.4: Team Competition Ranking

Points shall be allocated for each **Team Competition** World Championship competition as follows:

Pos.	%	Points
1	100	1000.000
2	80	800.000
3	60	600.000
4	50	500.000
5	45	450.000
6	40	400.000
7	36	360.000
8	32	320.000
9	29	290.000
10	26	260.000
11	24	240.000
12	22	220.000
13	20	200.000
14	18	180.000
15	16	160.000
16	15	150.000

2.3.5: Team Competition Cup

There shall also be a Team Competition Cup where team results for each competition will be tallied. There shall be no throw out result.

Tie Breaking: If two or more teams are tied, the number of first rankings or, if still tied, the number of second rankings, etc. prevails.

An updated Team Competition Cup Ranking will be posted at www.ATX.org by 18.00 UTC each Tuesday after a Team competition.

2.4: Athletes Briefing

It is mandatory for all competitors to participate in the Athletes Briefing. Time and place will be announced on-site in due time. Only competitors are allowed at the Athletes Briefing (no coaches, friends, family, etc.).

A rider who is not attending the Athletes Briefing will be disqualified.

2.5: Inspection and Training

It is each competitor's own responsibility to inspect the track before skating down the track. The inspection is to be carried out on foot and from outside the track.

To be allowed to start in the Shootout, each competitor must have completed the entire training program. The training is supervised and carried out in groups.

The Competition Committee and the ATSX Sport Director may disallow any competitor from competing at any time if the competitor shows an unacceptable attitude on the track or demonstrates insufficient skating skills that could create a hazard for him or other riders.

2.6: Contact / Disqualification

Contact or interference by means of holding, pushing, hitting, and purposeful hindrance resulting in a competitor's slowing down, falling or drifting off course shall lead to automatic disqualification. Unavoidable "casual contact" may be acceptable. Re-runs due to intentional contact are not allowed. A competitor who is disqualified because of intentional contact will automatically be ranked last in the respective round (DNS excluded). All contact infractions shall be sanctioned at the discretion of the Competition Committee.

Any disqualifications shall be announced immediately after each heat in a designated area at the bottom and/or top of the track.

If, for any reason, an athlete Did Not Start (DNS) at the start gate, he will be disqualified. His ranking will be determined as described under **Section 2.1.4.1**.

The same rules apply to the Team Competition. If one or more competitors of a team are disqualified, the whole team is disqualified.

If a competitor is disqualified because of intentional contact, the team shall automatically be ranked last in the respective round (DNS excluded). All contact infractions shall be sanctioned at the discretion of the Competition Committee.

2.7: Rule Violations

All violations against a rule can be followed by:

- Last pick of starting gate
- Prize money deduction
- Loss/deduction of points
- Suspension

The decision can be issued at any time at the discretion of the Competition Committee

2.8: False Start

A false start is considered a disqualification.

- Manipulation of the starting gate shall be deemed a false start.
- Trying to pass the starting gate before the start signal has been given (e.g. jumping over the starting gate) shall entail a direct disqualification with no re-run.
- Riders are not allowed to hold or pull the doors/starting machine during the starting procedure.

The same rules apply to the Team Competition. If one or more competitors of a team are disqualified, the whole team is disqualified.

An empty gate may not be filled by another rider.

2.9: Protest / Video Control

Any protest **must be filed** to the finish referee in the finish area on the ice before the next heat begins. Protests received after this time will not be accepted. For each official protest a fee of €100 (or equivalent in the host country currency) shall be charged. The competitor claiming an official protest needs to fill out and sign a waiver and will thereby accept the payment procedure. Only after the demanding competitor signed the waiver, it is an official protest.

Video control will be used for all Red Bull Crashed Ice competitions if possible. The duties of the Video Controller are to observe the competitors' passage on the course. Final decisions made by the Video Controller based on TV images are restricted to disqualifications and sanctions. The Video Controller is part of the Competition Committee.

Footage of the entire race or any specific sequence footage won't be provided or shared with competitors.



2.9.1: Payment Procedure

The protest fees' payment will be directly deducted from his Prize money of the competitor that claimed an official protest.

If for any reason a competitor does not pay the protest fee, he will not be able to register for any future Red Bull Crashed Ice competitions until the Sport Coordinator receives the official protest fee.

In case an official protest leads to a reverse decision by the Video Controller, the official protest fee will be waived.

Section 3 – Competition Notes

3.1: Equipment

A competitor may only take part in a Red Bull Crashed Ice competition with equipment conforming to the following regulations. A competitor is responsible for the equipment that he uses (skates, blades, helmets, knee pads, gloves, etc.). It is his duty to make sure that the equipment he uses conforms to the Red Bull Crashed Ice specifications and general safety requirements and is in working order.

A competitor's equipment shall consist of helmet, chest guard, shoulder protection, elbow pads, pants with plastic padding, knee and shinbone protection, and gloves.

It is forbidden to ride the track without a helmet. A rider who loses his helmet at any time on the track must stop, put the helmet back on, and fasten the chinstrap properly before continuing to skate down the track.

A rider who rides the track without a helmet will be disqualified (ranked last of the final race result), get zero points and no prize money for this competition. The Competition Committee will decide his participation in the next competition.

The complete protection equipment is mandatory whenever stepping onto the ice track, including:

- **Helmet**

On the track, every competitor shall wear a helmet at all times. MotoX or MTB Downhill CPSC Bicycle Safety Standard Certified, ASTM DH Certified, or CE EN1078 certified helmets are allowed. If the competitor wears a MTB or MotoX helmet, goggles are recommended. The chinstrap must be properly fastened.

Also allowed are hockey helmets approved by CE Certification, Hockey Equipment Certification Council (HECC), or Canadian Standards Association (CSA), with cage (maximum mesh size 9 × 5 cm).

- **Shoulder protection**

- **Elbow protection/pads**

- **Gloves**

The gloves must be covered by protective pads on top of hand and wrist. The palm of the glove must not be removed to permit the use of bare hands.

- **Knee and shinbone protection**

- **Skates & blades**

All types of skating boots are allowed. No blades with sharp points or any other feature that might harm other competitors are permitted. There should be a knob made of plastic or similar approved material on the upper back part of the blades.

If a competitor appearing at the start without the mandatory equipment will not be permitted to start.

In addition, it is recommended to wear:

- **Neck protector**
- **Spine protector**
- **Throat protector**
- **Mouth guard**
- **Chest and back protection shield**

Course Marshalls or any official organization may examine any piece of equipment at any time, on the track or at the finish area, at their own discretion. If a competitor is found to be lacking any piece of equipment at the start, he will be disqualified and ranked according to **Section 2.6**.

3.2: Starting and Bib Numbers

During all training sessions, Shootouts, and Finals (Individual and Team Competition), it is mandatory to wear the helmet numbers provided by the Competition Committee. Two numbers are to be attached to the sides of the helmet.

3.3: Competition Committee

The Competition Committee is comprised of the Sport Director, Event Director and ATSX President. This Committee shall be responsible for all rule reviews, course changes, and decisions on medical clearances. All Competition Committee decisions are final and without appeal.

In addition to the above members of the Competition Committee, the following associate members of the Competition Committee can be solicited:

- The Athletes' Representative can be solicited under particular circumstances. He has no voting right.
- The Video Controller will be a consultant of the Sport Director and has no voting right.
- The Start Referee is responsible for organizing and supervising the start and for the observance of all rules related to false starts, communication with the Competition Committee, equipment check, etc.
- Five to sixteen Course Marshalls (depending on course length) supervise the track from start to finish. If required, they can act as consultants to the Competition Committee.
- The Finish Referee is responsible for organizing and supervising the finish area (including the finish line).



In certain circumstances, the competition committee has the right to add, adjust or change a rule at any moment during the season.

3.4: Athletes' Representative

At the beginning of each Red Bull Crashed Ice season, an Athletes' Representative shall be appointed as a liaison between athletes and Competition Committee. This person must have participated in at least three full seasons of Ice Cross Downhill World Championship. The athletes taking part in the Shootout shall organize a vote and announce the name of the elected athlete to the Sport Director before the first official international training session.

3.4.1: Assistant Athletes' Representative

At the beginning of each Red Bull Crashed Ice season, an Assistant Athletes' Representative shall be appointed as assistant of the Athletes' Representative. The athletes taking part in the Shootout shall organize a vote and announce the name of the elected athlete to the Sport Director before the first official international training session.

3.5: Competition Cancellation

The following rules may apply under special circumstances.

Should a competition be cancelled in part, the results from the last complete round (including Shootout, Round of 64, Round of 32, Quarterfinals, and Semifinals) shall be considered the final results from that competition. If the competition is cancelled before the Finals starts, points shall be awarded according to the results of the Shootout List. Prize money will only be paid if the Finals are completed.

3.6: POV cameras

It is mandatory for all competitors to attach the official POV camera mount to their helmet and to wear a POV camera in case this is requested by the competition organization. In case a rider refuses to wear the POV camera, he will have the last pick of the starting gate and will get no Prize money.

3.7: Timing / Transponders

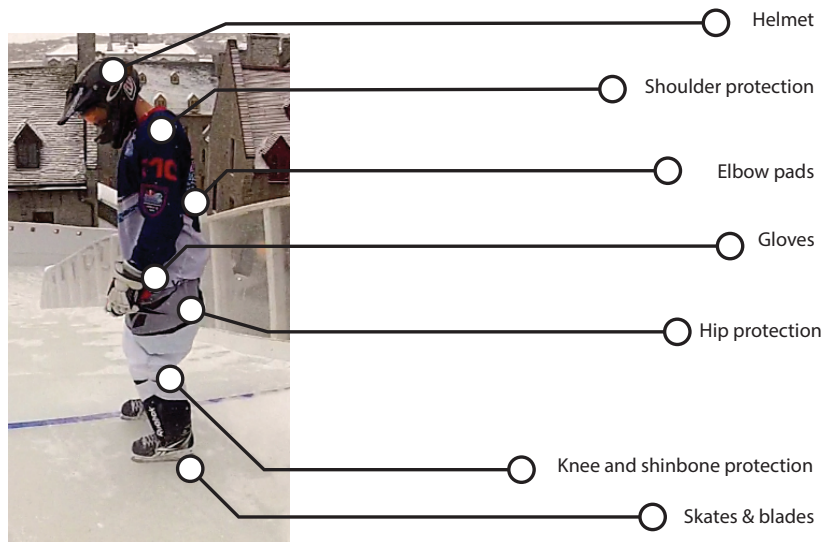
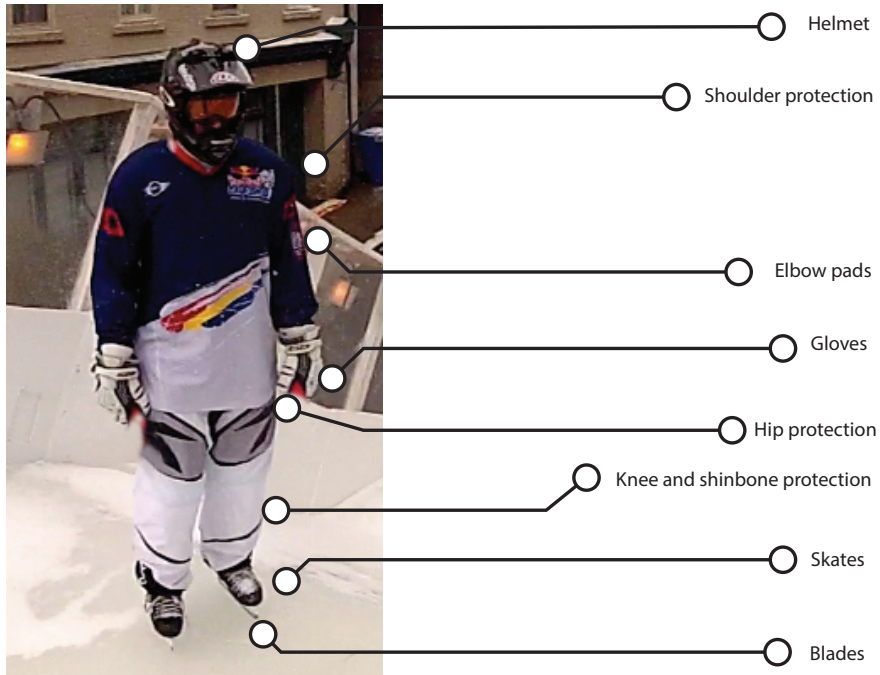
For the Shootout, the start impulse shall be given by the starting gate and the finish impulse by photocells (light beam). The final result for each competitor's run is then expressed to a hundredth of a second.

During the individual Shootout time trials, no more than two competitors may be on the track at the same time.

There is no timing system in the knockout rounds. Competitors' transponders and photo finish shall determine the official positions.

Each competitor have the responsibility to get his transponders' set on for Individual final and Team competition final. If a competitor does not return the transponders to the organization at the end of each competition, a fee of €80 will be deduct from his prize money.

REQUIRED EQUIPMENT



Additional highly recommended protection gear:

- Mouth guard - Back protection shield - Neck brace - Neck and throat protector

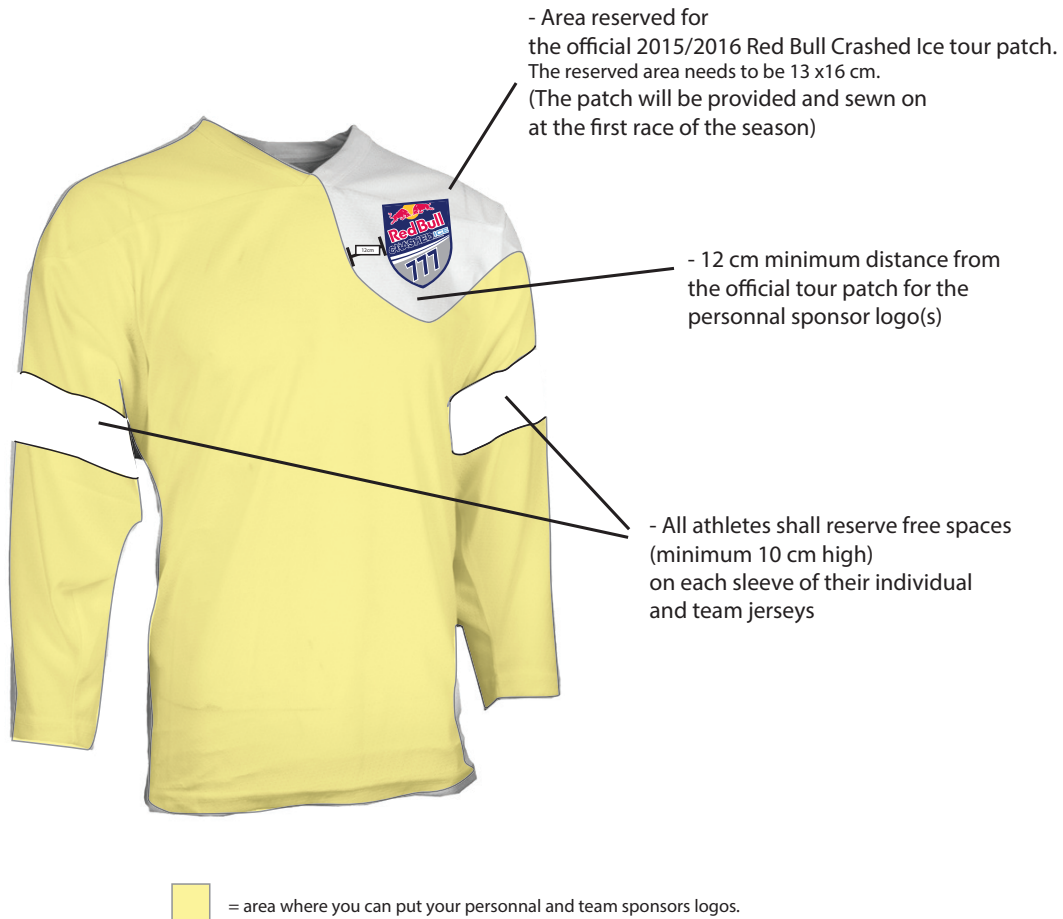


Example 1



Example 2

Rules for Individual and Team race riders jerseys' designs.



A rider won't be allowed to skate on the track if his jersey is not respecting the regulations